

Electrical

Voltage:1400 V AC(rms)/DC

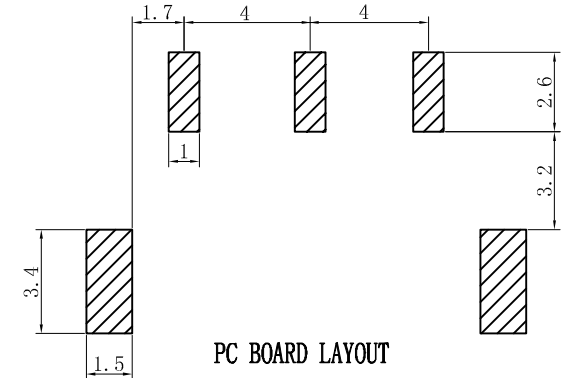
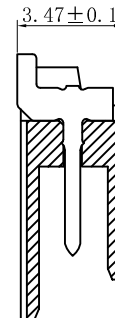
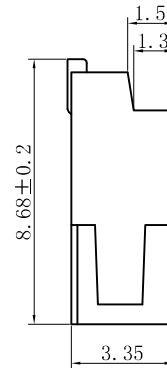
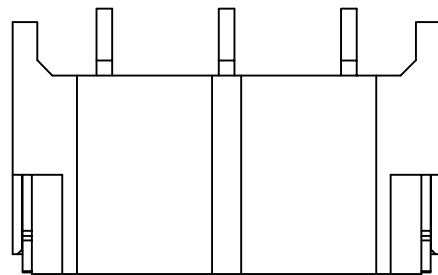
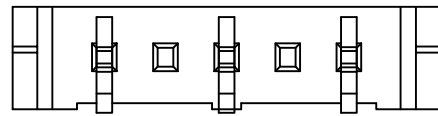
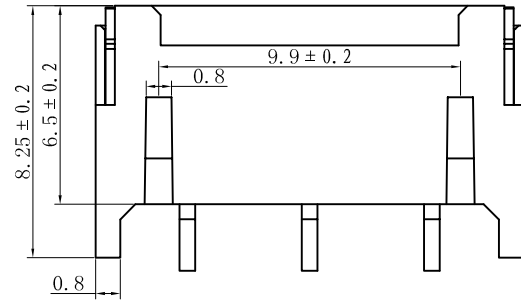
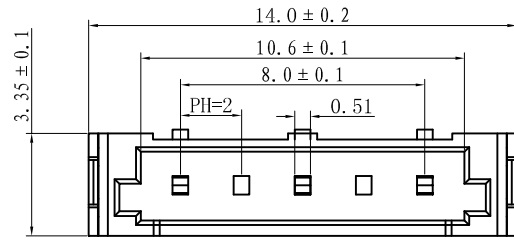
Current:1 A AC(rms)/DC

Contact Resistance:10 mΩ max

Dielectric Withstanding Voltage:3800 V AC/rms

Insulation Resistance:1000 MΩ min

Operating Temp:-25° C~+85° C



一般公差 TOLERANCES X. ±0.40 .XX ±0.20 .X ±0.30 .XXX ±0.10 ANGLES ±2°		深圳市宏利电子有限公司 Shenzhen Holy Electronic Co.,Ltd	
检验尺寸标示 SYMBOLS INDICATE CLASSIFICATION DIMENSION ● MARK IS CRITICAL DIM. ○ MARK IS MAJOR DIM.		工程图号 BHS40GY-3P	制图 (DR) '08/5/16 审核 (CHKD) 核准 (APPD) Rigo Lu
表面处理 (FINISH)		品名 BHS4.0mm-3P (高压插座5缺3)	张数 (SHEET) 1 OF 1
比例 (SCALE) 1:1		单位 (UNITS) mm	尺寸 (SIZE) A4 版本 (REV) 0

修订 REV	修改摘要 REVISION DESCRIPTION	日期 DATE	签名 SIGNATURE
-	-	-	-