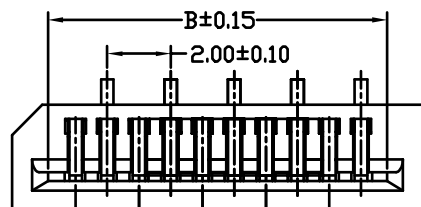
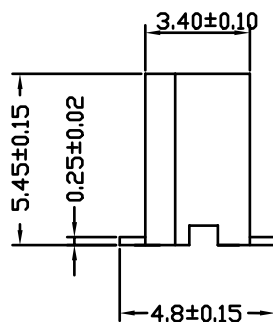
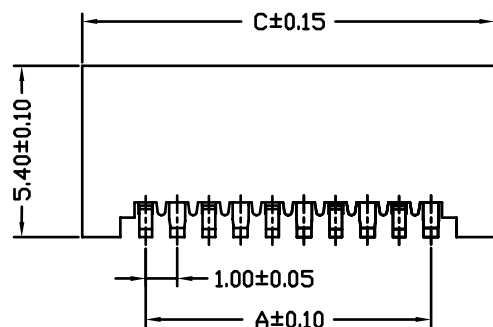
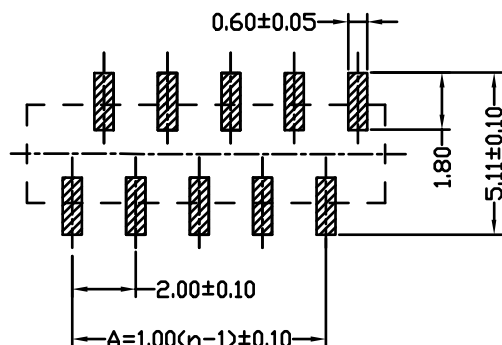


Specifications:

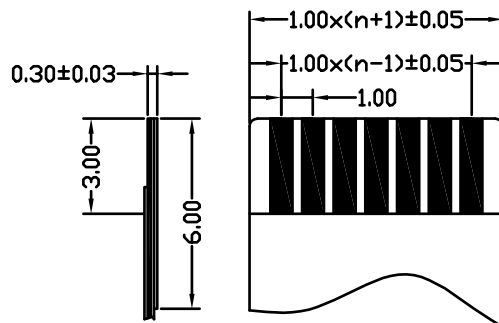
Housing: LCP UL94-V0 Color: Black  
 Contact: Phosphor Bronze  
 Operating Voltage: 50V AC/DC  
 Current Rating: 0.5A AC/DC  
 Withstand Voltage: 250V AC/Minute  
 Contact Resistance:  $\leq 20m\Omega$   
 Insulation resistance:  $\geq 100m\Omega$   
 Operating Temperature:  $-25^{\circ}\text{C} \sim +85^{\circ}\text{C}$



Circuit 1



SUGGESTED PCB LAYOUT  
(COMPONENT SIDE)



Accommodated FFC

Circuits	Dimensions (mm)			Circuits	Dimensions (mm)		
	A	B	C		A	B	C
04	3.00	5.00	7.25	18	17.00	19.00	21.25
05	4.00	6.00	8.25	19	18.00	20.00	22.25
06	5.00	7.00	9.25	20	19.00	21.00	23.25
07	6.00	8.00	10.25	21	20.00	22.00	24.25
08	7.00	9.00	11.25	22	21.00	23.00	25.25
09	8.00	10.00	12.25	23	22.00	24.00	26.25
10	9.00	11.00	13.25	24	23.00	25.00	27.25
11	10.00	12.00	14.25	25	24.00	26.00	28.25
12	11.00	13.00	15.25	26	25.00	27.00	29.25
13	12.00	14.00	16.25	27	26.00	28.00	30.25
14	13.00	15.00	17.25	28	27.00	29.00	31.25
15	14.00	16.00	18.25	29	28.00	30.00	32.25
16	15.00	17.00	19.25	30	29.00	31.00	33.25
17	16.00	18.00	20.25				

一般公差  
TOLERANCES  
X ±0.40 XX ±0.20  
.X ±0.30 .XXX ±0.10  
ANGLES ±2°

深圳市宏利电子有限公司  
Shenzhen Holy Electronic Co.,Ltd

检验尺寸标示  
SYMBOLS  $\odot$   $\ominus$  INDICATE  
CLASSIFICATION DIMENSION  
 $\odot$  MARK IS CRITICAL DIM.  
 $\ominus$  MARK IS MAJOR DIM.

工程图号: FPC1055DLBZ-nP  
品名: FPC1.0mm -nP H5.5 单面接正位  
制图 (DR): '08/5/16  
审核 (CHKD):  
核准 (APPD): Rigo Lu

修订 REV	修改摘要 REVISION DESCRIPTION	日期 DATE	签名 SIGNATURE
-	-	-	-

表面处理 (FINISH):  
比例 (SCALE): 1:1  
单位 (UNITS): mm  
张数 (SHEET): 1 OF 1  
尺寸 (SIZE): A4  
版数 (REV): 0